



EVOLUTION



THE BEST PANEL COMPANY

PARTNERS IN...

An American Brick Revolution



WWW.EVOLUTIONBRICK.COM

126 OLD HIGHWAY 60 EAST HARDINSBURG, KY 40143

THE THIN BRICK ADVANTAGE / PANEL SYSTEMS



THE BEST PANEL COMPANY

FACTORY-APPLIED SYSTEM

BEST Thin Brick panels are a factory- assembled system featuring genuine clay kiln-fired 1/2" thin brick adhered to a 16" x 48" panel of three (3) different designs depending upon what you need to accomplish: High R-Values, weather resistance price point, or interior applications.

3 OPTIONS TO BEST SUIT YOUR PROJECT:



3CI CONTINUOUS INSULATION

This continuously insulated panel allows you to achieve R-5 upto R-30, all carried on the outside of the stud wall. Using tested techniques and Concealer Screws of extremely high shear and tensil strength, 3Ci is Florida Wind-Load certified and can deliver a great masonry look with upto R-30 insulation. --All in one wall panel system.

25 YEAR WARRANTY

CONCRETE BASED PANEL SYSTEM

This panel system is a 16" x 48" concrete backer board used with Thin Brick that is pre-applied at the factory. This product is designed for exterior and interior usage. The product is strong, durable and perfect for just about any application.



ADHESIVES

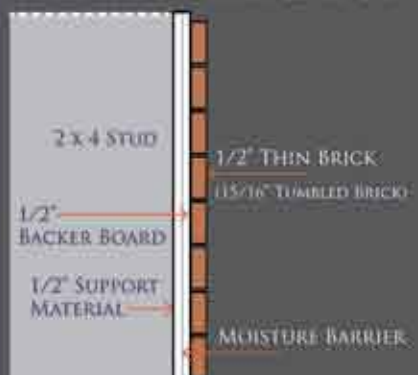
An exterior, waterproof, synthetic rubber based adhesive that complies with APA specification AFG-01 is used to bond Thin Brick to the backer board. Field applied mortar creates a chemical and mechanical bond when installation is complete. Made in the USA by Franklin International.

ASSEMBLY AND INSTALLATION

Installation of Panel Brick is a straight forward construction procedure. No highly skilled labor required to install. Please see our Installation Guide on our website. Ask your sales person for details.



PANEL APPLICATION



WALL DEFLECTION

Maximum L / 240 vs L / 800 for full size brick

SIZE

Panels 16" x 48" x 1" thick (1 7/16" Tumbled)

COVERAGE

Panels 5.33 square feet per panel
Approximately 19 panels per square
One square covers 100 square ft.

PACKAGING

Panels 50-60 panels depending on brick and panel chosen

MORTAR

Mortar One 70 lb. bag covers approximately 50 square feet of wall space. Will vary with brick selection.



THE REVOLUTION SERIES

Our Tumbled products offer the most authentic duplication of tumbled brick in the industry.

AZALEA*



CARMEL*



WINE COUNTRY*



BLACK COFFEE*



SIERRA TUMBLED*



SAUGATUCK*



MONTEREY*



TWILIGHT*



*Stocking Color

PEWTER



GRAY RANGE



PORT HUNTINGTON



RALEIGH RED



REGAL OAK



WINTER WHITE



CHERRY



"We have tried several methods of installing thin brick until we started using BEST Panel Company. They saved us time and money and we will never use any other system."

~Salano Roos
Earthbound Trading Company

THE MIDWEST SERIES

Our straight edge products offer the most authentic duplication of classic straight brick in the industry. Check out these great colors!

10 - CLASSIC RED*



27 - GEORGETOWN*



15 - PROVIDENCE



95 - NEW BEDFORD



24 - BOSTON*



"We went into this 36,000 SF project in Glen Cove, NY thinking BEST Panel would save us 30% labor. We were wrong. They saved us 60% labor on this project compared to traditional installation!"

*~Scott Southwick
Premier Building Systems*

21 - RALEIGH



400 - DOWNING STREET



26 - SAVANNAH*



97 - VALLEY FORGE*



81 - CHARCOAL



401 - GRAPHITE



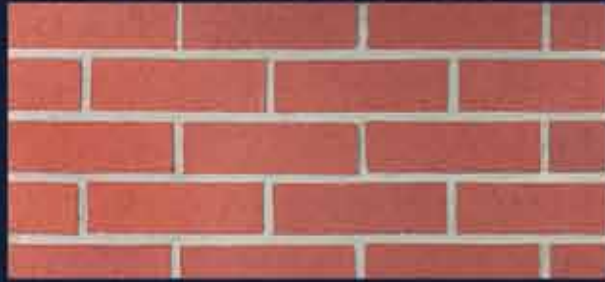
*Stocking Color

Other colors available in Midwest Series not shown here.

THE CAROLINA SERIES

THE FINISHED LOOK OF THIN BRICK

200 WILLIAMSBURG*



510 GREYWOOD*



410 LINCOLN HERITAGE*

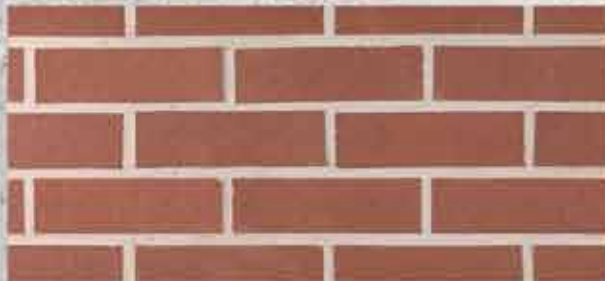


710 WINTER STORM*



*Stocking Color

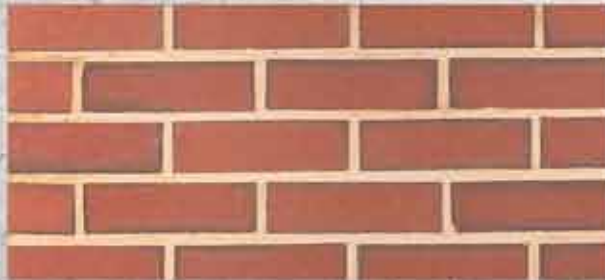
250 RED WINE



675 OLD BRECKINRIDGE



300 STADIUM FLASH



760 MILKY WAY



600 SAND DUNE



820 OASIS



Other colors available in Carolina Series not shown here.



**FOR MORE INFORMATION ABOUT
OUR PRODUCTS AND SERVICES VISIT:**

WWW.BESTPANELCOMPANY.COM

**126 OLD HIGHWAY 60 EAST
HARDINSBURG, KY 40143**

PHONE: 270-788-3535

EMAIL: INFO@BESTPANELCOMPANY.COM