

THE LIMITLESS APPLICATIONS OF EVOLUTION THIN BRICK



FACTORY-APPLIED SYSTEM

TBPC Thin Brick panels are a factory-assembled system featuring genuine clay kiln-fired 1/2" thin brick adhered to a 16" x 48" panel of three (3) different designs depending upon what you need to accomplish: High R-Values, weather resistance price point, or interior applications.

3 OPTIONS TO BEST SUIT YOUR PROJECT:



3CI CONTINUOUS INSULATION

This continuously insulated panel allows you to achieve R-5 upto R-30, all carried on the outside of the stud wall. Using tested techniques and Concealer Screws of extremely high shear and tensile strength, 3CI is Florida Wind-Load certified and can deliver a great masonry look with upto R-30 insulation. —All in one wall panel system.

25 YEAR WARRANTY



Util-A-Crete Panel System*

This panel system is a 16" x 48" concrete backer board used with Thin Brick that is pre-applied at the factory. This product is designed for exterior and interior usage. The product is strong, durable and perfect for just about any application.

Quiet-Brace (Black Board)

This panel system is the same size as our other panels but is on a backer board designed specifically for interior use. It is our most economical panel system.



Adhesives

An exterior, waterproof, synthetic rubber based adhesive that complies with APA specification AFG-01 is used to bond Thin Brick to the backer board. Field applied mortar creates a chemical and mechanical bond when installation is complete. Made in the USA by Franklin International.

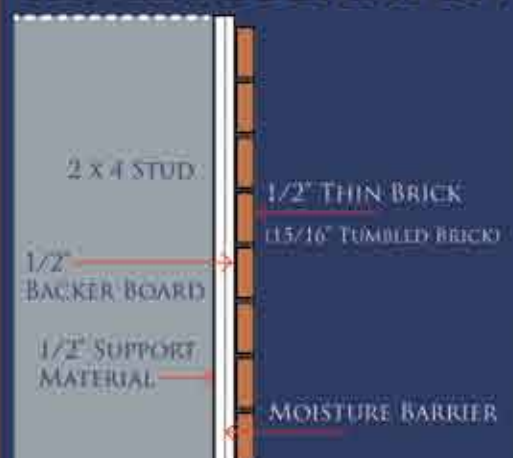
Assembly And Installation

Installation of Panel Brick is a straight forward construction procedure. No highly skilled labor required to install. Please see our Installation Guide on our website. Ask your sales person for details.

*Meets Federal specification LLL-1-535B, Class E, Style 2 conforms to Industry Standards ANSI/AHA A194, 1-1985 Type IV, Class 2 and ASTM C-208-94, UL tested 1 hour fire rating.



PANEL APPLICATION



SIZE	
Panels	16" x 48" x 1" thick (1 7/16" Tumbled)
COVERAGE	
Panels	5.33 square feet per panel Approximately 19 panels per square. One square covers 100 square ft.
PACKAGING	
Panels	50-60 panels depending on brick and panel chosen
MORTAR	
Mortar	One 80 lb. bag covers approximately 50 square feet of wall space.



EVOLUTION

PARTNERS IN...

An American Brick Revolution



WWW.EVOLUTIONBRICK.COM

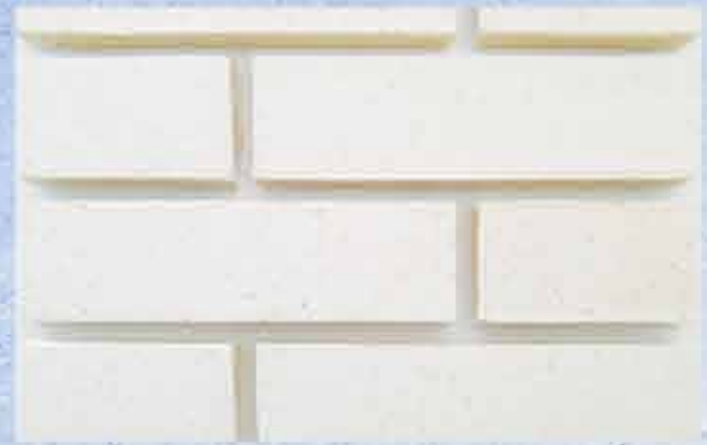
The BEST Panel Company
126 Old Highway 60 E. Hardinsburg, KY 40143
270.788.3535 Fax 270.580.7268 www.bestpanelcompany.com

126 OLD HIGHWAY 60 EAST HARDINSBURG, KY 40143

THE CAROLINA BRICK SERIES

NEW COLOR

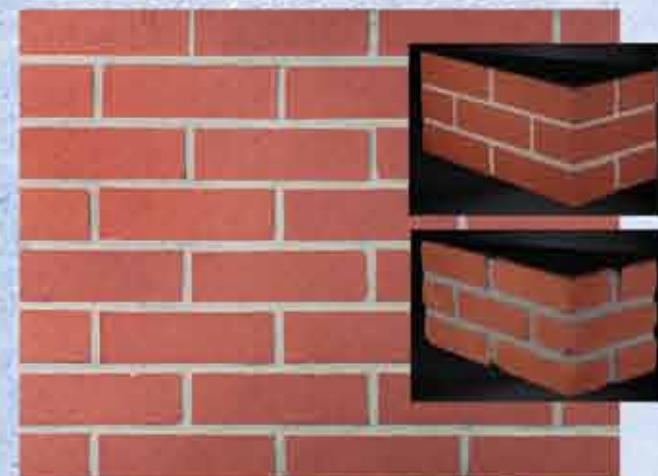
710 WINTER STORM



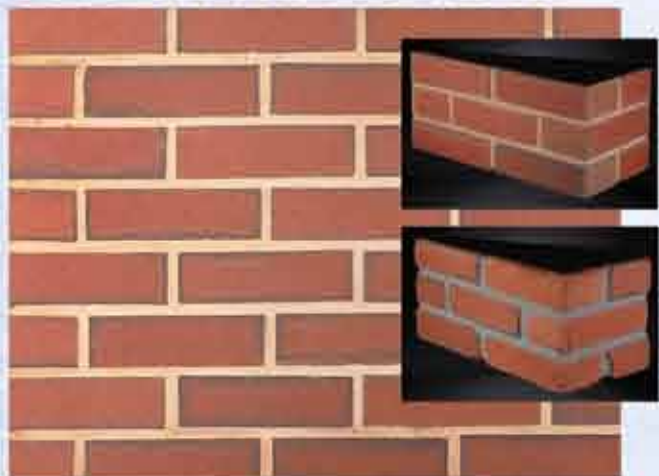
OUR CAROLINA SERIES THIN BRICK LINE OFFERS A VARIETY OF BEAUTIFUL COLORS RANGING FROM REDS, TO BROWNS, TO TAN AND EVEN GREYS AND OUR NEW WHITE. ALL OF THESE COLORS ARE AVAILABLE IN STRAIGHT EDGE 9/16" THICK BRICK ALONG WITH SEVERAL COLORS ALSO BEING OFFERED IN A RUMBLED/TUMBLED TEXTURES OF 15/16" THICKNESS. STRAIGHT EDGE PRODUCT IS A GREAT PRICE POINT AND WE OFFER THE "BEST" CORNERS IN THE INDUSTRY. FOR MORE PICTURES GO TO:

WWW.BESTPANELCOMPANY.COM

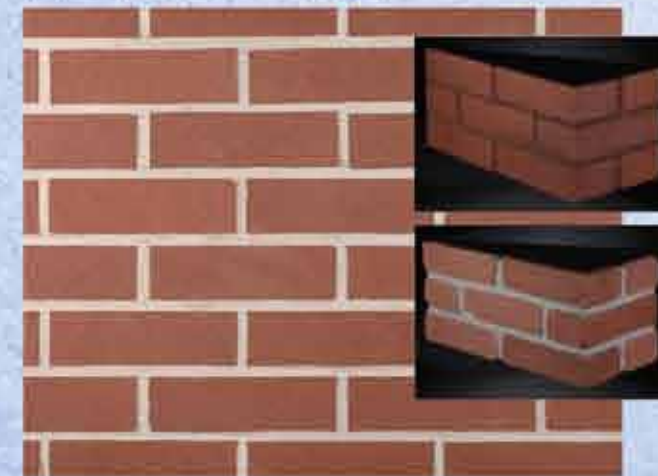
200 WILLIAMSBURG



300 STADIUM FLASH



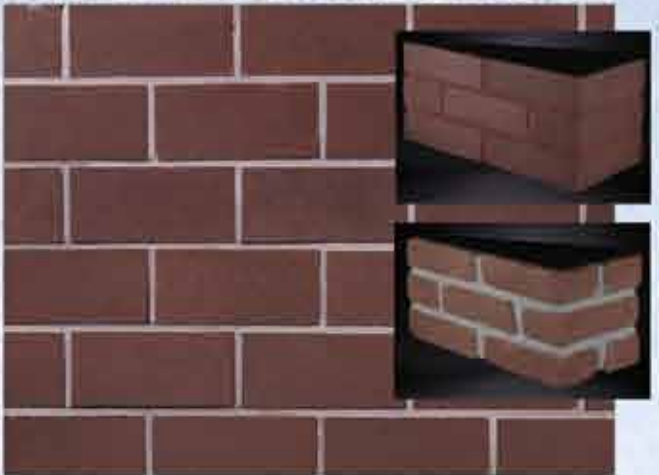
250 RED WINE



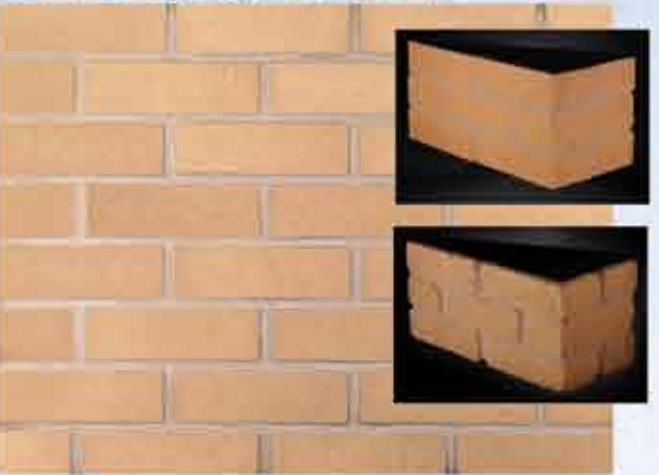
255 CLASSIC FLASH



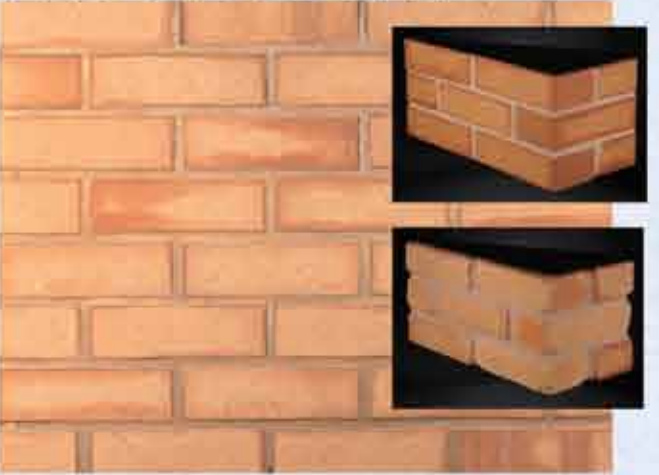
410 LINCOLN HERITAGE



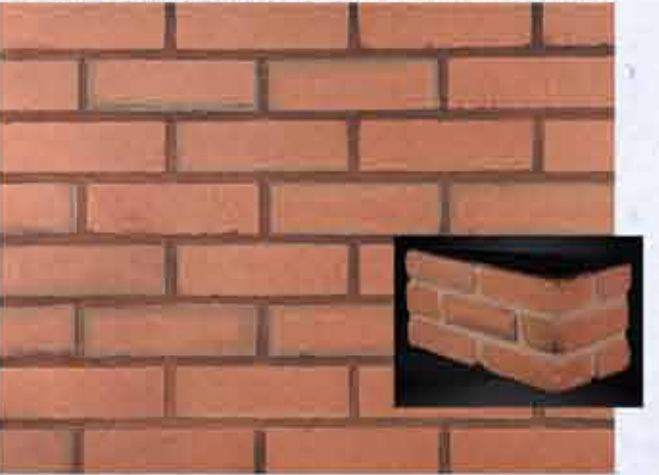
600 SAND DUNE



655 DESERT SUN



675 OLD BRECKINRIDGE



510 GREYWOOD



760 MILKY WAY



615 COPPER



820 OASIS



INTRODUCING OUR **NEW** REVOLUTION SERIES OUR **TUMBLED & TEXTURED THIN BRICK**

10 SIERRA TUMBLED



11 MONTEREY TUMBLED



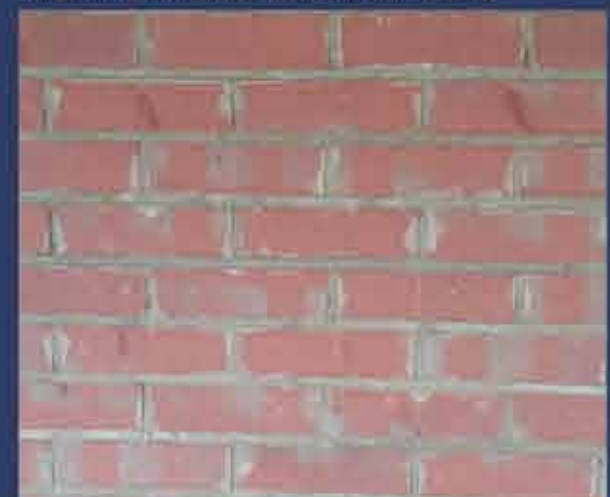
12 WINE COUNTRY



14 AZALEA



15 PLATE CANYON



16 RECLAIMED

