



FACTORY-APPLIED SYSTEM

TBPC Thin Brick panels are a factory- assembled system featuring genuine clay kiln-fired 1/2" thin brick adhered to a 16" x 48" panel of three (3) different designs depending upon what you need to accomplish: High R-Values, weather resistance price point, or interior applications.

3 OPTIONS TO BEST SUIT YOUR PROJECT:



Util-A-Crete Panel System*

This panel system is a 16" x 48" concrete backer board used with Thin Brick that is pre-applied at the factory. This product is designed for exterior and interior usage. The product is strong, durable and perfect for just about any application.

Quiet-Brace (Black Board)

This panel system is the same size as our other panels but is on a backer board designed specifically for interior use. It is our most economical panel system.

Adhesives

An exterior, waterproof, synthetic rubber based adhesive that complies with APA specification AFG-01 is used to bond Thin Brick to the backer board. Field applied mortar creates a chemical and mechanical bond when installation is complete. Made in the USA by Franklin International.

Assembly And Installation

Installation of Panel Brick is a straight forward construction procedure. No highly skilled labor required to install. Please see our Installation Guide on our website. Ask your sales person for details.

**Meets Federal specification LLL-1-535B, Class E, Style 2 conforms to Industry Standards ANSI/AHA A194, 1-1985 Type IV, Class 2 and ASTM C-208-94. UL tested 1 hour fire rating.*

3CI CONTINUOUS INSULATION

This continuously insulated panel allows you to achieve R-5 upto R-30, all carried on the outside of the stud wall. Using tested techniques and Concealer Screws of extremely high shear and tensil strength, 3Ci is Florida Wind-Load certified and can deliver a great masonry look with upto R-30 insulation. --All in one wall panel system.

25 YEAR WARRANTY



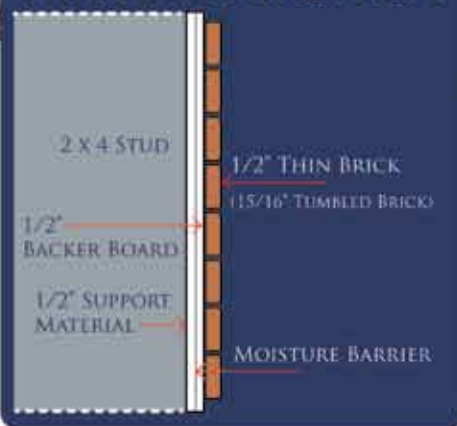
EASY INSTALL

PREFAB CORNERS

THERMA STEEL®



PANEL APPLICATION



WALL DEFLECTION

Maximum L / 240 vs L / 600 for full size brick

SIZE

Panels 16" x 48" x 1" thick (1 7/16" Tumbled)

COVERAGE

Panels 5.33 square feet per panel
Approximately 19 panels per square.
One square covers 100 square ft.

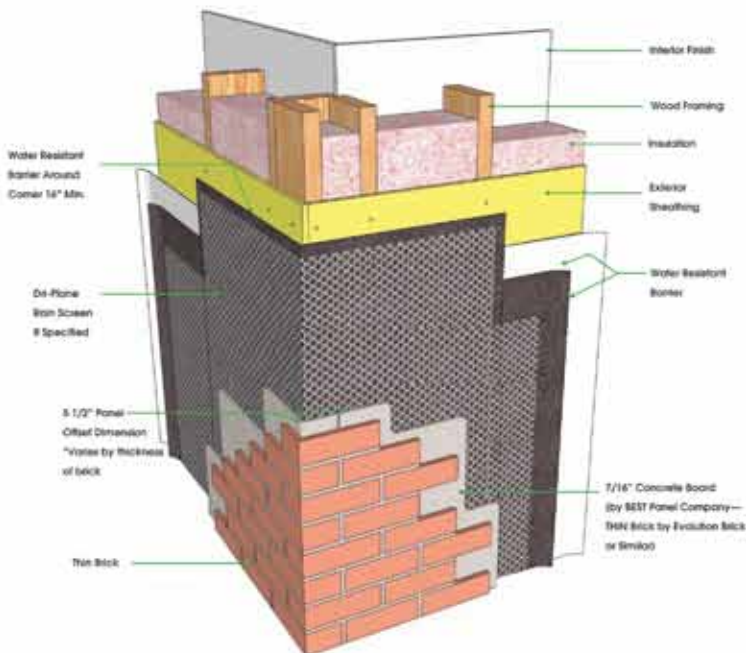
PACKAGING

Panels 50-60 panels depending on brick and panel chosen

MORTAR

Mortar One 70 lb. bag covers approximately 50 square feet of wall space. Will vary with brick selection.

**UTIL-A-CRETE PANEL SYSTEM
CORNER DETAIL**



**UTIL-A-CRETE PANEL SYSTEM
FULL WALL & CORNER DETAIL**

